



SOUTHERN ARIZONA WATERCOLOR GUILD, INC.

5420 E. BROADWAY BLVD., #240 • 520.299.7294
SOUTHERNAZWATERCOLORGUILD.COM

Photopea.com

Photo Editing Software for SAWG Show Photos

An important part of entering artwork in a SAWG Show is to provide a high quality, properly named and properly sized image of your artwork.

Works of art presented in SAWG Shows are not only viewed in person at the SAWG gallery, but are also available to viewers (and potential buyers) digitally through the SAWG Website, Facebook Page, and in SAWG print materials. These photos are also used to catalog your artwork for the archives and in Masterpiece inventory so you get paid upon the sale of your work. As you can see, an image that is clear, well lit, properly sized, and appropriately named is an essential element to showcasing your artwork.

Digital cameras in our cellphones have simplified photographing artwork for SAWG shows. Now there is a simple, tool to aid you in preparing your image properly for SAWG Shows.

Photopea.com is a free web-based photo editing program that will allow you to crop, resize and rename your show photo quickly and easily. Since this application is web-based, there is nothing to download. And yes, it's free. You don't even need to create an account to use the program. You can access this website from any of your devices: iPhone, Android Phone, iPad, Android Tablet, PC, Laptop, or Mac. Photopea.com will perform the same when accessed from any device. This program has many of the tools and features of high-end photo editing software like Lightroom or Photoshop but is a clean, simple interface that will allow you to do the basic editing you need quickly.

Let's get started resizing an image for a SAWG Show.

On any web browser using any device, go to Photopea.com. This opens the application HOME SCREEN

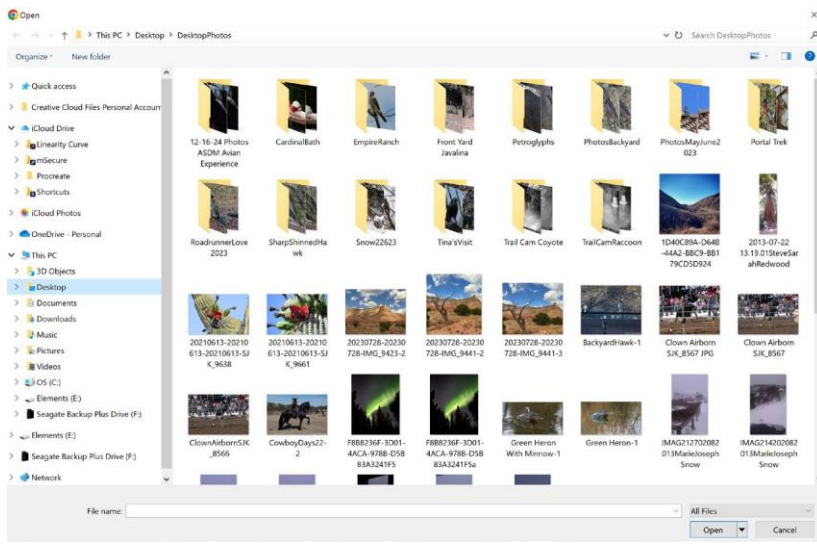
Next, open the JPEG image you wish to resize by choosing OPEN FROM COMPUTER or DRAG and DROP the image you wish to work with into the box at the bottom of the home page.

(if you are opening a RAW images see note at the end of this document)



Clicking “Open from Computer” will open a dialog box that allows you to navigate through your files to find the photo you wish to resize.

On my PC Laptop it looks like this:

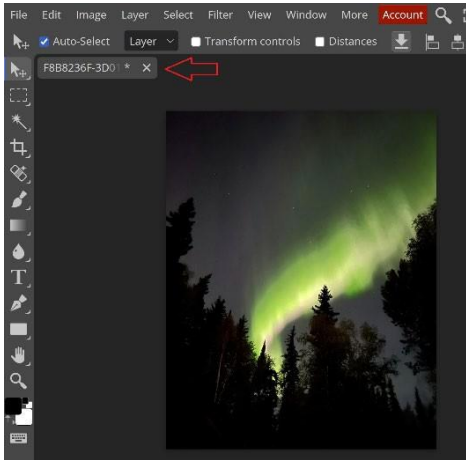


On my iPhone it looks like this:



Navigate to the photo you want to edit and click OPEN or double click on the photo to open it in Photopea.com. The photo will be brought into Photopea.com on a “background” layer and is ready for editing.

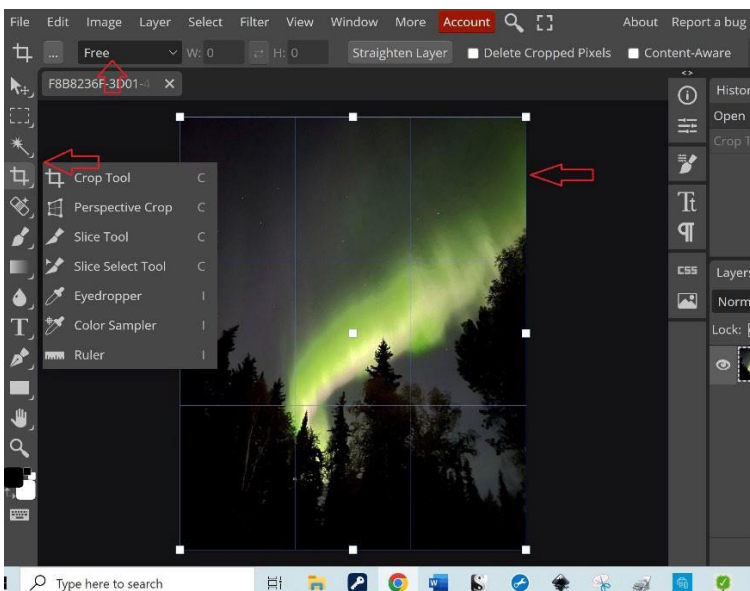
(Notice that the name of the photo appears in a floating box in the upper left corner above the photo. If you wish to cancel editing this photo click the X beside the photo name to remove it and return to the HOME screen.)



Crop the photo to the edge of the matted area of the artwork. No mat should be showing in the photo. Do not photograph the artwork through glass or plexiglass. The artwork is best photographed in soft natural light. This will result in capturing colors that more closely match the actual colors of the artwork. Hold the camera parallel to the artwork when taking the photo and to help avoid casting a shadow on the artwork, stand back a bit from the artwork and use the zoom in feature on your camera phone to bring the image closer.

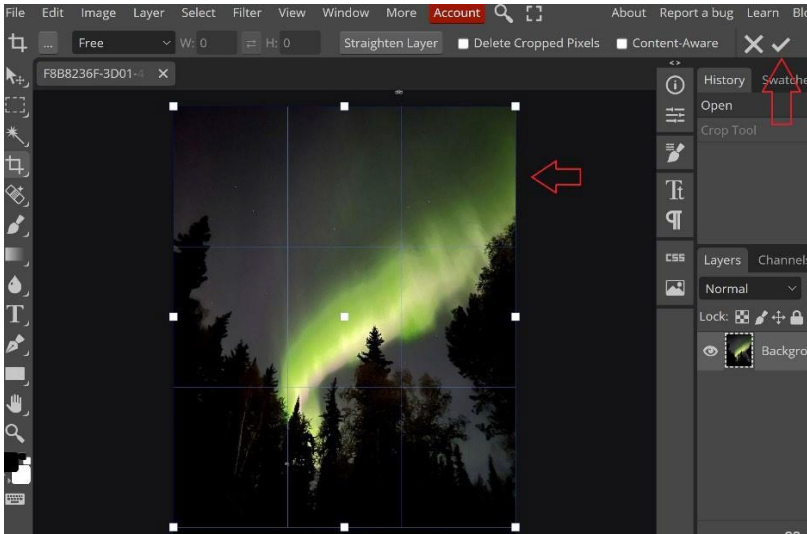
Here's how to use Photopea to crop an image:

Choose the Crop Tool from the menu running along the left side of the window (4th tool down). If the crop tool is not visible, RIGHT click on the small arrow in the right corner of the tool in that position to open a tool flyout menu then choose the Crop Tool from the list. Clicking on (selecting) the crop tool places a crop box with handles around your image. The default mode for cropping is “Free” as indicated in the box along the top of the window. This will allow you to move the crop edge of any side independently.

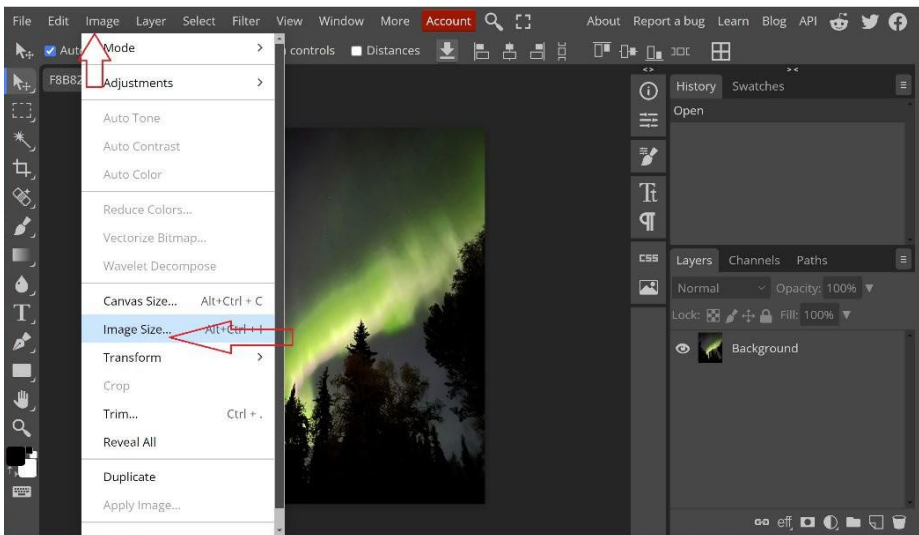


Click and drag each edge of the crop box to where you want to crop the image then click the Check Mark in the upper right to confirm and complete the crop.

NOTE: If you make a mistake, or wish to go back, select EDIT from the top menu and choose Undo/Redo or Step Backward.



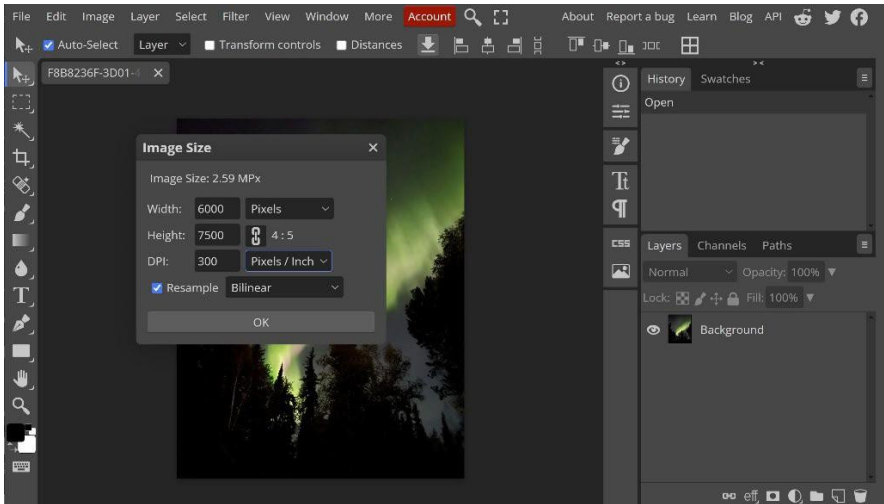
Now to resize this photo for a SAWG Show, click IMAGE from the top menu and choose IMAGE SIZE from the dropdown menu.



This will bring up a dialog box to enter your image size adjustments.

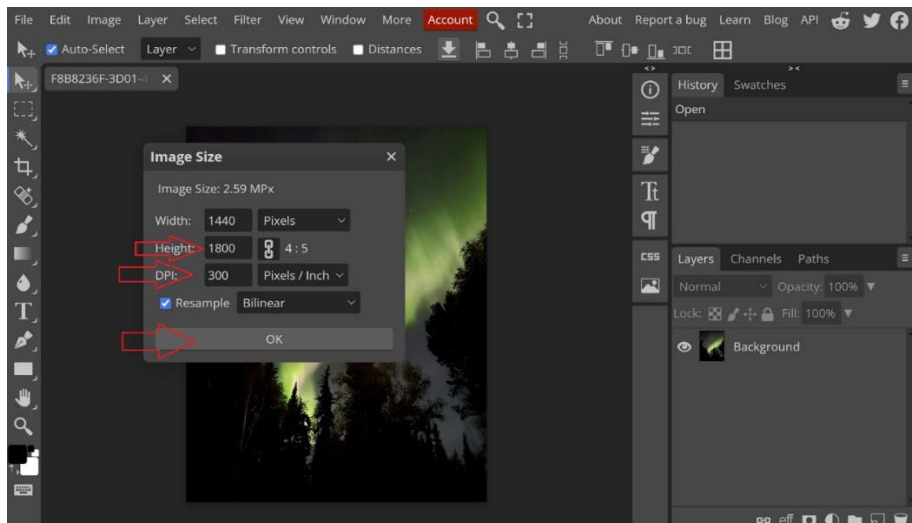
First check that the following default settings are correct.

- Width and Height should be expressed in PIXELS. If not, use the dropdown arrow to choose.
- Aspect Ratio (looks like Chain Links) should be LOCKED as indicated by a black box behind the chain links. This will keep the height and width in proportion when you make adjustments so your image will appear correctly after adjustments are made.
- DPI should be expressed in PIXELS / INCH. Use the dropdown arrow to correct if necessary.
- Resample box should be checked and Bilinear should be chosen.



Now make your image size adjustments:

- First set DPI to 300 pixels / inch. (Note: this will also change your height and width dimensions so you'll want to make this adjustment first)
- Next change the LARGER of the two values (width or height) to 1800 pixels by clicking on the box to highlight the current value, then typing in the value 1800.
- Press either Enter or TAB. Since the aspect ratio lock is on, the other dimension will adjust in proper proportion.
- Click OK.
- That's it! You have successfully resized your image to SAWG Show Standards!



Now that you have adjusted your photo to the correct size, you need to SAVE the photo in a place you can easily find it when it comes time to enter the show. This will also give you an opportunity to name the photo correctly for the SAWG Show. If your photo is not properly named, it cannot be uploaded and attached to your artwork show entry, entered into the Masterpiece inventory, or saved to the SAWG archive.

Reminder: The Naming format is as follows with no capitalization, no spaces, or additional punctuation:

- *the First Four Letters of the artist's last name (lower case)*
- *the entry number 1 or 2*
- *a short title (all lower case)*
- *followed by .jpg*
*e.g. **smit1mydream.jpg***

Save your properly Cropped and Resized Image to your device by clicking:

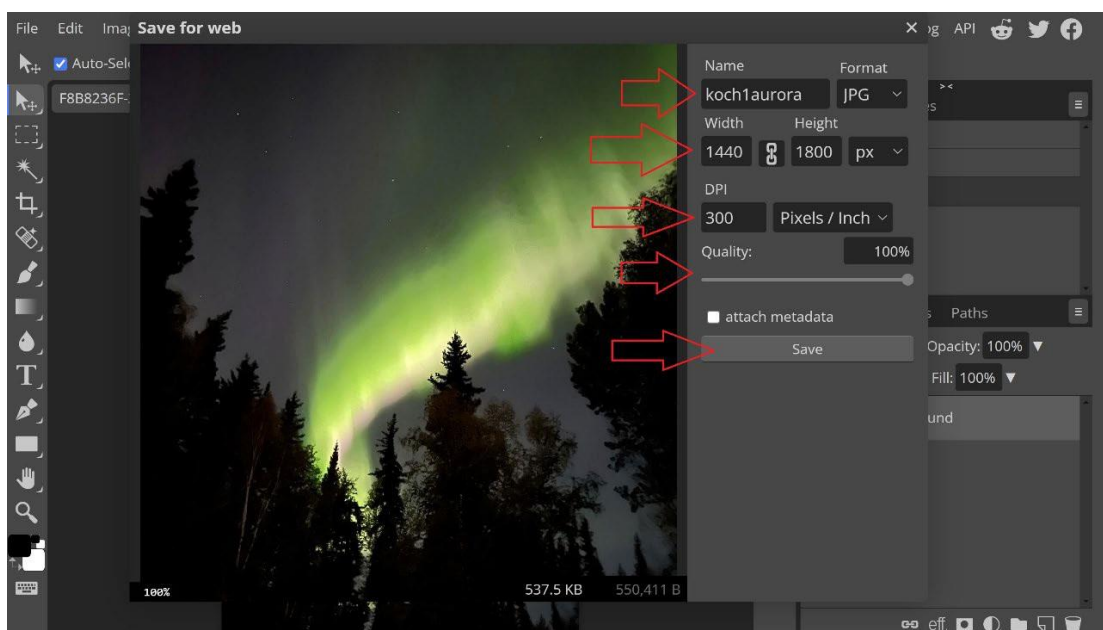
FILE (top menu)

Choose EXPORT AS

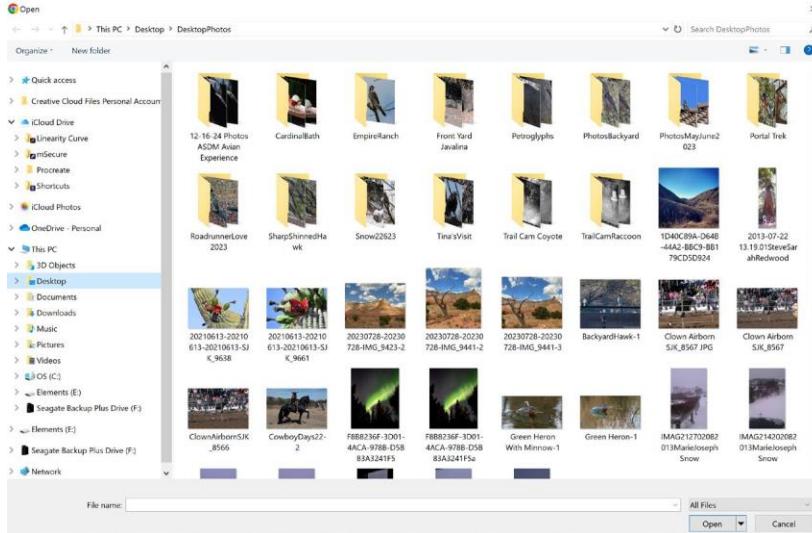
Then JPG from the list

Hint: It's helpful to save your image to a dedicated folder in a place you will easily remember, like your desktop. You may want to have a folder for "SAWG Images not Resized" and one for "SAWG Images Resized". It's also easiest to save your image to the device you will be using when you enter the show.

You will now see a dialog box titled "Save for web" with your photo and the details on the right. You can type in the name you wish to use for this photo (first 4 letters of last name, 1 or 2, and short title). Double check that the format is JPG, the largest dimension is 1800 px, the DPI is 300, and the quality is 100%. Click SAVE.



A dialog box will open so you can navigate to the folder where you want to save this photo:



Note for users of RAW Images:

When you open a RAW photo in Photopea, you will first see the image in a “RAW Photopea” toolbox. On the right are a series of basic editing tools you can use to make preliminary adjustments to the photo prior to opening the photo in the full Photopea software. This mirrors the “Camera Raw” function in Photoshop. Make any desired adjustments to the photo using the tools provided in the righthand toolbar then choose either OPEN, which will open the adjusted image in the Photopea home page for further editing (like resizing). Follow instructions above. Choosing the “Down Arrow JPG” button will open a dialog box allowing you to save the photo to the destination of your choice as a .JPG without any further edits.